

Questionnaire

What are the requirements of the Workplace of Tomorrow if People and Planet really matter?

1. Thirty minutes of walking or cycling to work can reduce the risk of the following medical conditions:

- a) coronary heart disease by 50%
- b) diabetes in adulthood by 50%
- c) obesity by 50%
- d) all of the above
- e) none of the above



2. In 2006/07, the household income of the top 20% of households in the UK was how many times greater than that for the bottom 20% (before taxes and benefits)?

- a) 5 times
- b) 10 times
- c) 15 times
- d) 20 times
- e) 25 times

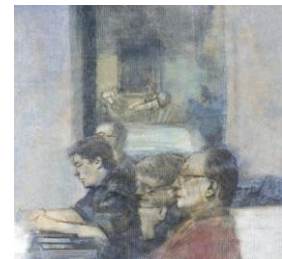


3. There are now how many small businesses in the UK?

- a) 4.7 million
- b) 6.2 million
- c) 7.9 million
- d) 10.5 million
- e) 12 million

4. The service sector now employs how much of the workforce in the

- UK?
- a) 48%
 - a) 64%
 - b) 83%
 - c) 94%
 - d) 96%



5. When will we have more over 60 year olds in the UK than under 16's?

- a) 2010
- b) 2015
- c) 2020
- d) 2025
- e) 2030



6. The Encyclopaedia Britannica was in operation over 225 years. How long did it take to destroy it?

- a) 2 years
- b) 5 years
- c) 10 years
- d) 15 years
- e) 25 years

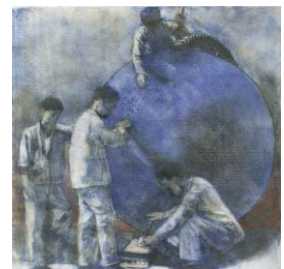


7. What of these are the case?

- a) Burning fossil fuels and deforestation emits 9 billion tons of carbon each year
- b) Electricity generation and transportation are the largest sources of CO₂ emissions, with coal-fired power plants the biggest culprit
- c) We are experiencing the sixth mass extinction of species
- d) 60% of ozone lost in the last 60 years
- e) 70% of the world's forests eliminated
- f) 30% of world's arable land lost in 40 years
- g) 90% of all large fish gone from the oceans

8. When the public are asked 'In these times of economic challenges, climate warming and social injustice, who do you trust to make a difference?' what is the most common response?

- a) Government
- b) Workplace
- c) Community
- d) Friends
- e) Global Institutions
- f) Religious Faiths
- g) Civil/Third Sector



9. Which of these have had the greatest impact in your workplace over the last five years?

- a) Issues of ethics and values
- b) Financial viability
- c) Inspection, regulation, compliance, monitoring
- d) Demographic changes e.g. ageing population, migration
- e) Day-to-day operations
- f) Stakeholder issues e.g. customers, shareholder involvement
- g) Staff issues e.g. health, talent, social care, flexibility
- h) Planetary issues e.g. climate, resources, governance
- i) Ways of working e.g. technology, collaboration, home based

